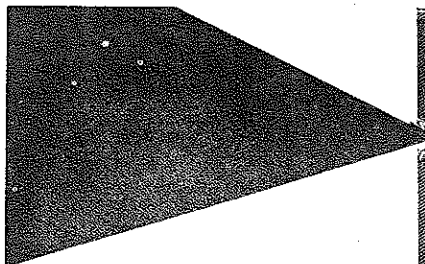
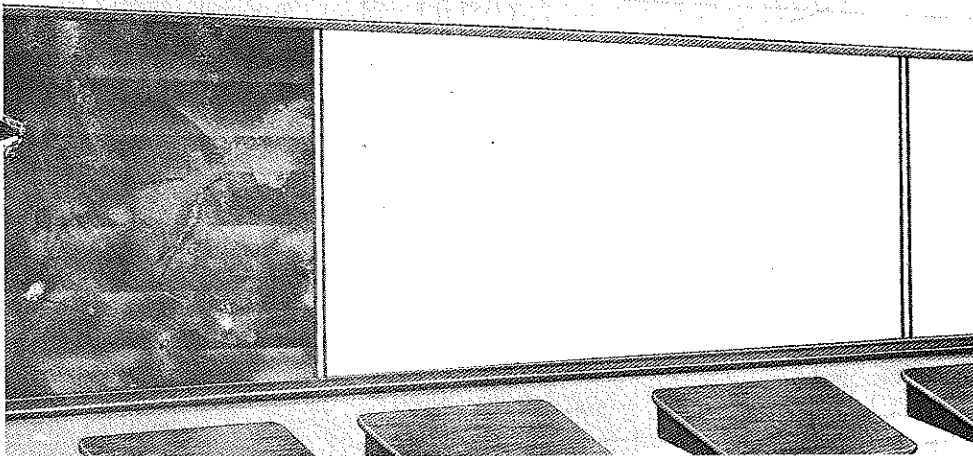


# Claridge® VITRACITE® PORCELAIN ENAMEL STEEL CHALKBOARD SKINS



*Modernize with permanent new chalkboards right over existing badly-worn chalkboards.*

Vitracite Chalkboard Skins



Vitracite skins are available in standard widths of up to 4 feet. Standard lengths are 6, 8, 10 and 12 feet. Factory cut widths and lengths are also available. Price is based on standard sizes.

Installing Vitracite porcelain enamel steel skins (face sheets) over existing old, badly-worn chalkboards is the most practical way to rejuvenate old boards. They can be applied on the face of natural slate, composition chalkboard, or slated plaster walls. Vitracite chalkboard skins are ideal for use in updating and remodeling old school buildings. Their use converts old defective boards into permanent new chalkboards of superior quality which will provide many years of service -- in fact, they will probably outlast the building. The sheets are shipped precut to customers' specifications. In most cases, they can be applied over existing boards without removing the trim, or, if the trim is carefully removed, it can be reused.

## Fast and Easy Installation

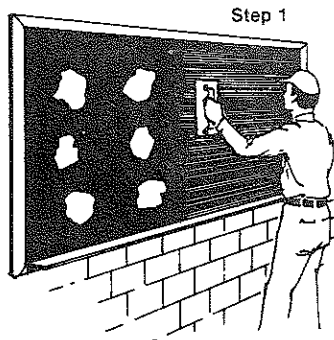
### Step 1

Set new skin against existing board to insure proper fit. Make a small mark in the center of the skin and on the wall or tray. This mark will be useful for skin placement after adhesive has been applied. Remove skin and proceed as instructed.

This picture shows the adhesive being applied in large gobs and the installer troweling the adhesive with a 1/8" serrated trowel similar to applying the adhesive for linoleum or floor tile.

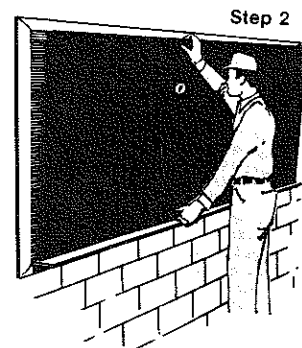
Before applying Vitracite steel skins, existing chalkboard surface should be thoroughly cleaned. Loose spots should be nailed to the wall. Rough spots should be removed and all chalk dust thoroughly cleaned off the boards to provide a smooth clean surface.

Adhesive should be applied as illustrated. Place large gobs of adhesive equally distributed and then trowel evenly with a serrated trowel. Do not cover entire wall. Cover only an area large enough for one panel as adhesive may film over if left too long.



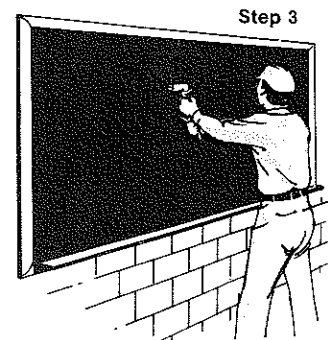
### Step 2

Immediately after adhesive is applied as directed, set lower edge of chalkboard skin on a straight edge lining up marks made in Step 1, and starting from the center, press into place. Top edge of chalkboard skin can serve as straight edge or nails can be partly driven into wall at two-foot intervals for panel to rest on until adhesive sets.

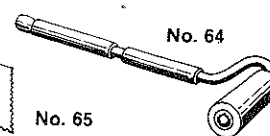
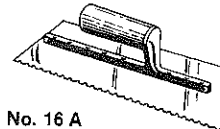
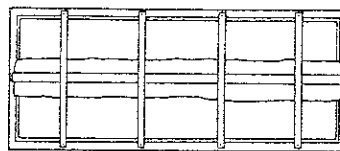


### Step 3

To make firm contact, chalkboard skins should be pressed tight against the wall. Again, starting from the center, remove all air pockets. This is easily accomplished with a rubber roller similar to the type of roller used for laying floor tile or linoleum as shown in the illustration. Boards must be shored or blocked to wall for 48 - 72 hours for adhesive to bond securely. See illustration below. Most installations can be made without removing trim. If trim has been removed, it can now be replaced and the new chalkboard is ready for use.



Shoring illustration



**No. 16A Chalkboard Adhesive** -- This adhesive has been formulated for use on all types of walls and is being used under all climatic conditions. It should be used for installing Vitracite steel chalkboard skins. One gallon will cover an area of approximately 80 square feet. Wt. per gallon - 10 lbs.

**No. 65 Serrated Steel Trowel** -- Made of masonry trowel steel with serrated edge with 1/8" notches. The best tool for properly spreading chalkboard adhesive. Weight 5 lbs.

**No. 64 Pressure Roller** -- Lightweight rubber roller designed for erecting vertical wall panels. Especially recommended for installing Vitracite chalkboard skins. Has firm rubber grip. Weight 4 lbs.

Manufacturers: **CLARIDGE PRODUCTS AND EQUIPMENT, INCORPORATED**  
 P. O. Box 910, 601 Hwy. 62-65 South  
 HARRISON, ARKANSAS 72602-0910  
 Phone: 870/743-2200 Fax: 870/743-1908